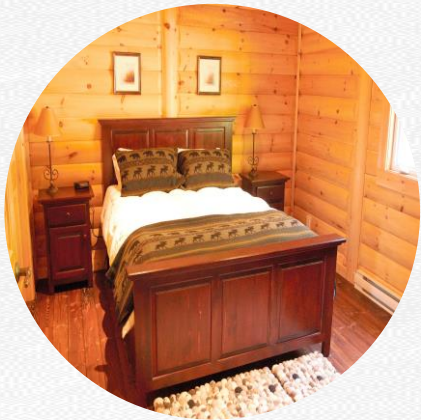
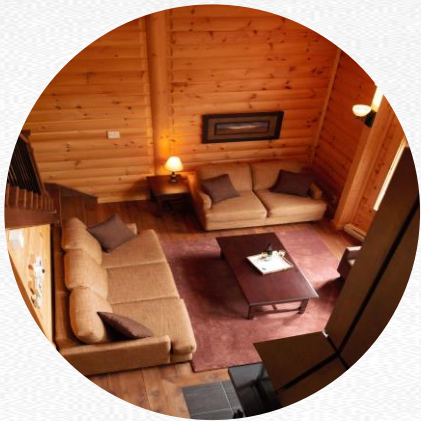


The image shows the interior of a rustic log cabin. The walls are made of horizontal log siding. In the center is a large, black metal wood-burning stove with a prominent copper-colored, conical chimney hood. To the left, a dark wood dining table is set with several chairs. In the foreground, there are two brown leather sofas with patterned throw pillows and a dark wood coffee table. To the right, a set of double glass doors leads to a balcony. The floor is made of dark wood planks. The lighting is warm, with recessed ceiling lights and a lamp on a side table.

TERRACES

2 OR 3 BEDROOMS

RESIDENCE FLATS, 4 OR 6 PERSONS, SHARED HOT TUB



COMFORT



3 bedrooms



1 Fully equipped kitchen



Private balcony



Air conditioning



2 bathrooms



Indoor fireplace



BBQ



DVD, Cable/Satellite



Shared Outdoor Hot tub



Washing machine & Drying machine



Free Wi-Fi



Outdoor parking



No smoking



Pets allowed

LAY-OUT

TERRACES 3 BEDROOMS

Main Level

Kitchen, Dining Room, Living room

Balcony,

Master bedroom: Queen bed

En-suite bathroom: Shower and bath

Upper floor

Bedroom: Queen bed

Bedroom: Double bed

Bathroom: Bath

TERRACES 2 BEDROOMS

Main Level

Utility room, Kitchen, Dining Room,

Living room, Balcony,

Upper floor

Bedroom: Queen bed

Bedroom: Queen bed

Bathroom: Bath